

General Purpose IEC Fuses



NH Fuses (Plain Blades) gG 400V, 500V, 690V

NH Fuse System



DIN 57 636/VDE 0636 Parts 1, 10, 21, 22, 201
IEC 60269-2
DIN 43 620 Parts 1 to 4 (Standard dimensions)

The use category is identified by two letters, the first indicating the operational class and the second the object to be protected. The Ferraz shawmut range includes fuse-links to DIN VDE 0636 standard for the following uses categories:

- gG: general purpose cable and line protection
- aM: Partial purpose, motor circuit protection
- gTr: general purpose, transformer protection
- gR: general purpose, fast acting
- aR: partial purpose, fast acting

Classification

The NH system is classed among plug-in fuse systems and is comprised of:

- fuse-base, (possibly including terminal covers and phase barriers)
- fuse-link with blade contact
- fuse-link replacement device (LV HRC fuse puller)

Since the design of this system cannot guarantee non-interchangeability of rated current, it must be handled by a qualified professional.

Approval symbols



Germany



Austria



Switzerland



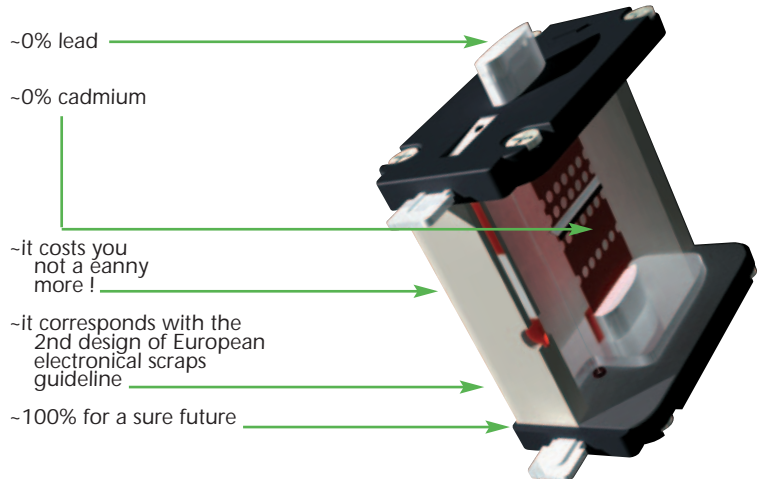
Netherlands



Beige melted



Red non melted



General Purpose IEC Fuses



Cd/Pb-free

with non-isolated gripping lugs, double indicator, contact blades, complying with DIN VDE 0636 Part 201 and IEC 60269-2-1

NH Fuses (Plain Blades) gG 400V, 500V, 690V gG 500V Size 000 to 4a

NH-fuses, 500VAC gG

Size	Rated current I_N (A)	Power dissipation (W)	FS ref.-no.	Previous ref.	Micro-switch ⁽¹⁾	weight kg/pce	pack.	Catalog Number
000	2	1,9	B211946	1B613.	Y	0,13	3	NH000GG50V2
000	4	1,5	M212462	1B619.	Y	0,13	3	NH000GG50V4
000	6	1,6	D213995	1B623.	Y	0,13	3	NH000GG50V6
000	10	1,1	B219651	1B631.	Y	0,13	3	NH000GG50V10
000	16	1,8	K222097	1B635.	Y	0,13	9	NH000GG50V16
000	20	2,3	A222847	1B637.	Y	0,13	9	NH000GG50V20
000	25	2,4	E201185	1B639.	Y	0,13	9	NH000GG50V25
000	32	3,1	Z211438	1B643.	Y	0,13	9	NH000GG50V32
000	35	3,0	C211947	1B645.	Y	0,13	9	NH000GG50V35
000	40	3,7	N212463	1B647.	Y	0,13	9	NH000GG50V40
000	50	4,1	T212974	1B651.	Y	0,13	9	NH000GG50V50
000	63	5,4	E213996	1B655.	Y	0,13	9	NH000GG50V63
000	80	6,5	Y216543	1B659.	Y	0,13	9	NH000GG50V80
000	100	7,5	B219122	1B663.	Y	0,13	9	NH000GG50V100
00	125	10,0	R210863	1B765.	Y	0,20	3	NH00GG50V125
00	160	12,3	P211084	1B769.	Y	0,20	3	NH00GG50V160
0	6	1,6	H213148	1B023.	Y	0,27	3	NH0GG50V6
0	10	1,1	G214159	1B031.	Y	0,27	3	NH0GG50V10
0	16	1,8	Q215179	1B035.	Y	0,27	3	NH0GG50V16
0	20	2,3	R215686	1B037.	Y	0,27	3	NH0GG50V20
0	25	2,4	Y216198	1B039.	Y	0,27	3	NH0GG50V25
0	32	3,1	W216702	1B043.	Y	0,27	3	NH0GG50V32
0	35	3,0	J217220	1B045.	Y	0,27	3	NH0GG50V35
0	40	3,7	P217731	1B047.	Y	0,27	3	NH0GG50V40
0	50	4,1	Z218246	1B051.	Y	0,27	3	NH0GG50V50
0	63	6,6	N218765	1B055.	Y	0,27	3	NH0GG50V63
0	80	8,0	C219284	1B059.	Y	0,27	3	NH0GG50V80
0	100	9,4	D219814	1B063.	Y	0,27	3	NH0GG50V100
0	125	11,8	P222492	1B065.	Y	0,27	3	NH0GG50V125
0	160	14,6	F223013	1B069.	Y	0,27	3	NH0GG50V160
0	200	18,1	C229611	1B071.	Y	0,27	3	NH0GG50V200
0	224	19,2	D229612	1B073.	Y	0,27	3	NH0GG50V224
0	250	20,3	E229613	1B075.	Y	0,27	3	NH0GG50V250
1	16	1,8	M200801	1B135.	N	0,28	3	NH1GG50V16
1	20	2,3	C201344	1B137.	N	0,28	3	NH1GG50V20
1	25	2,4	N201860	1B139.	N	0,28	3	NH1GG50V25
1	32	3,1	L211081	1B143.	N	0,28	3	NH1GG50V32
1	35	3,0	A211600	1B145.	N	0,28	3	NH1GG50V35
1	40	3,7	Y212633	1B147.	N	0,28	3	NH1GG50V40
1	50	4,1	B213648	1B151.	N	0,28	3	NH1GG50V50
1	63	6,6	L214669	1B155.	N	0,28	3	NH1GG50V63
1	80	8,0	S215687	1B159.	N	0,28	3	NH1GG50V80
1	100	9,4	X216703	1B163.	N	0,28	3	NH1GG50V100
1	125	11,8	Q217732	1B165.	Y	0,30	3	NH1GG50V125
1	160	14,6	A218247	1B169.	Y	0,30	3	NH1GG50V160
1	200	18,0	P218766	1B171.	Y	0,30	3	NH1GG50V200
1	224	19,0	D219285	1B173.	Y	0,30	3	NH1GG50V224
1	250	20,0	E219815	1B175.	Y	0,30	3	NH1GG50V250
1	315	20,5	Q228519	1B179.	Y	0,42	3	NH1GG50V315
1	355	23,7	R228520	1B181.	Y	0,42	3	NH1GG50V355

(1) Suitable for Microswitch describes page 106

General Purpose IEC Fuses



NH Fuses (Plain Blades) gG 400V, 500V, 690V gG 500V Size 000 to 4a



NH-fuses, 500VAC gG

with non-isolated gripping lugs, double indicator, contact blades, complying with DIN VDE 0636 Part 201 and IEC 60269-2-1

Cd/Pb-free

Size	Rated current I_N (A)	Power dissipation (W)	FS ref.-no.	Previous ref.	Micro- switch ⁽¹⁾	weight kg/pce	pack.	Catalog Number
2	25	2,4	N200802	1B239.	N	0,42	3	NH2GG50V25
2	32	3,1	D201345	1B243.	N	0,42	3	NH2GG50V32
2	35	3,0	P201861	1B245.	N	0,42	3	NH2GG50V35
2	40	3,7	M211082	1B247.	N	0,42	3	NH2GG50V40
2	50	4,1	B211601	1B251.	N	0,42	3	NH2GG50V50
2	63	6,8	Z212634	1B255.	N	0,42	3	NH2GG50V63
2	80	8,3	C213649	1B259.	N	0,42	3	NH2GG50V80
2	100	10,7	M214670	1B263.	N	0,42	3	NH2GG50V100
2	125	12,2	T215688	1B265.	N	0,42	3	NH2GG50V125
2	160	15,0	Y216704	1B269.	N	0,42	3	NH2GG50V160
2	200	18,5	R217733	1B271.	N	0,42	3	NH2GG50V200
2	224	19,2	Q218767	1B273.	N	0,42	3	NH2GG50V224
2	250	20,6	R222494	1B275.	N	0,42	3	NH2GG50V250
2	300	21,0	P200803	1B277.	Y	0,64	3	NH2GG50V300
2	315	25,0	E201346	1B279.	Y	0,64	3	NH2GG50V315
2	355	31,5	Q201862	1B281.	Y	0,64	3	NH2GG50V355
2	400	28,5	N211083	1B283.	Y	0,64	3	NH2GG50V400
2	425	29,2	S228521	1B285.	Y	0,64	3	NH2GG50V425
2	500	35,6	T228522	1B287.	Y	0,64	3	NH2GG50V500
3	250	21,1	C211602	1B375.	N	0,65	1	NH3GG50V250
3	300	20,0	A212635	1B377.	N	0,65	1	NH3GG50V300
3	315	25,0	L213151	1B379.	N	0,65	1	NH3GG50V315
3	355	32,0	K214162	1B381.	N	0,65	1	NH3GG50V355
3	400	34,0	T215182	1B383.	N	1,05	1	NH3GG50V400
3	425	34,0	B216201	1B385.	Y	1,05	1	NH3GG50V425
3	450	38,0	Z216705	1B386.	Y	1,05	1	NH3GG50V450
3	500	43,0	M217223	1B387.	Y	1,05	1	NH3GG50V500
3	630	43,1	S217734	1B389.	Y	1,05	1	NH3GG50V630
3	800	53,2	V228523	1B391.	Y	1,05	1	NH3GG50V800
with screw contact								
4	400	31,0 *)	A216039	8004.4007	N	2,00	1	NH4GG50V400-8
4	500	35,0 *)	X216542	8004.5007	N	2,00	1	NH4GG50V500-8
4	630	46,6 *)	W217576	8004.6307	N	2,00	1	NH4GG50V630-8
4	800	70,0 *)	E218090	8004.8007	N	2,00	1	NH4GG50V800-8
4	1000	83,3 *)	H201694	8004.1007	N	2,00	1	NH4GG50V1000-8
4	1250	110,0 *)	C213994	8004.1257	N	2,00	1	NH4GG50V1250-8
contact blades for NH-bottom size 4a with swivel unit								
4a	500	35,0 *)	D201184	8014.5007	N	1,95	1	NH4AGG50V500-8
4a	630	46,6 *)	T205752	8014.6307	N	1,95	1	NH4AGG50V630-8
4a	800	70,0 *)	Y211437	8014.8007	N	1,95	1	NH4AGG50V800-8
4a	1000	83,3 *)	A219650	8014.1007	N	1,95	1	NH4AGG50V1000-8
4a	1250	110,0 *)	J200637	8014.1257	N	1,95	1	NH4AGG50V1250-8

*) with indicator on top

(1) Suitable for Microswitch describes page 106

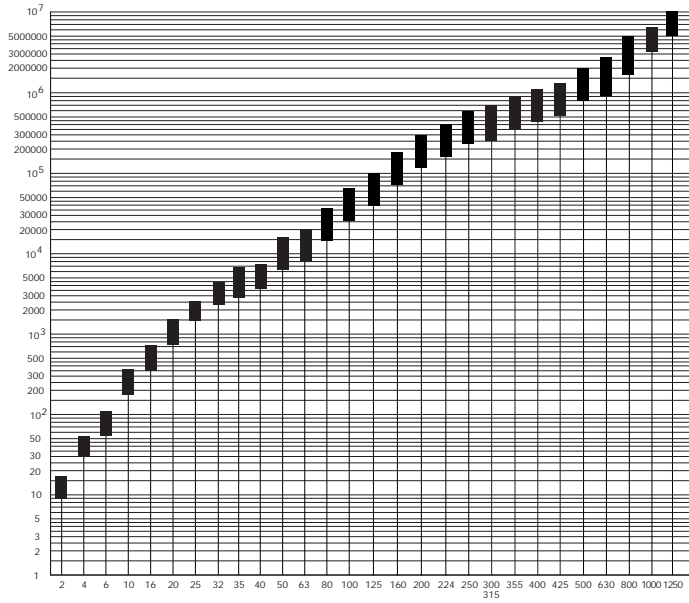
General Purpose IEC Fuses



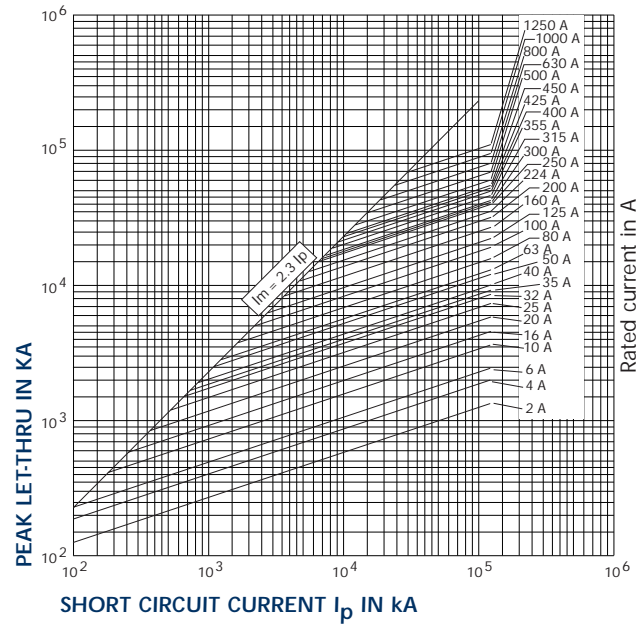
NH Fuses (Plain Blades) gG 400V, 500V, 690V gG Curves Set

NH-fuses, 500VAC gG

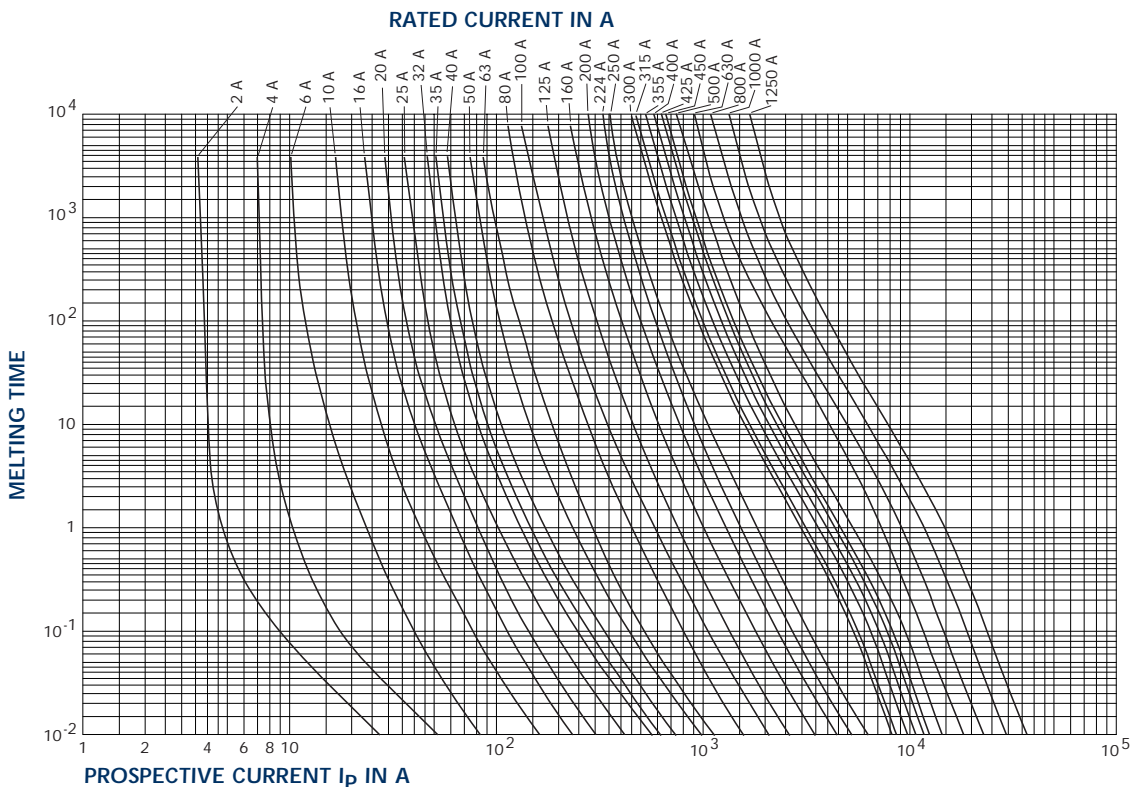
Total Clearing I²t



Current Limitation Curves



Time VS. Current Characteristics

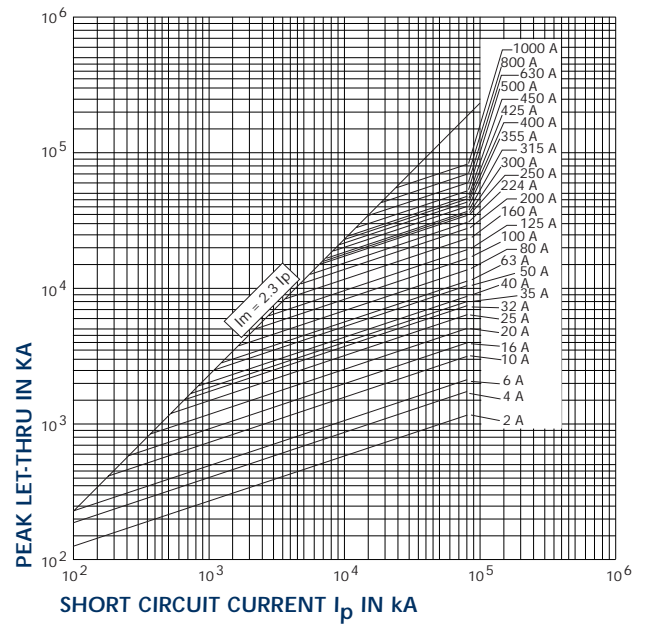
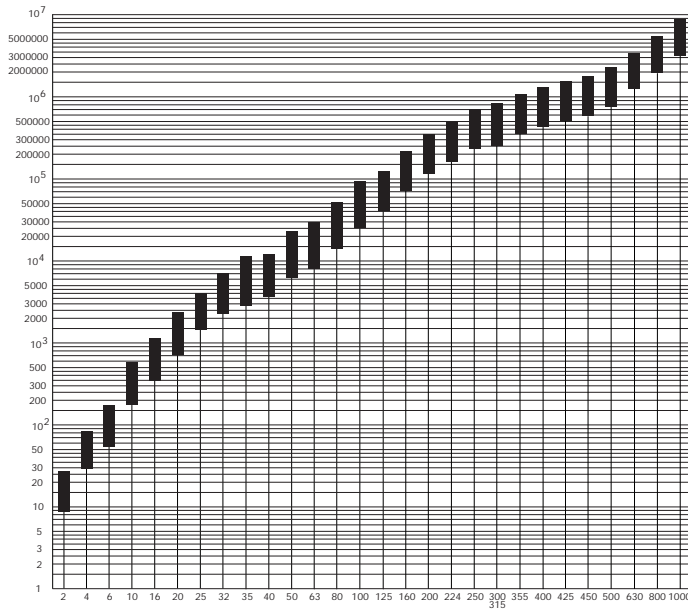


General Purpose IEC Fuses

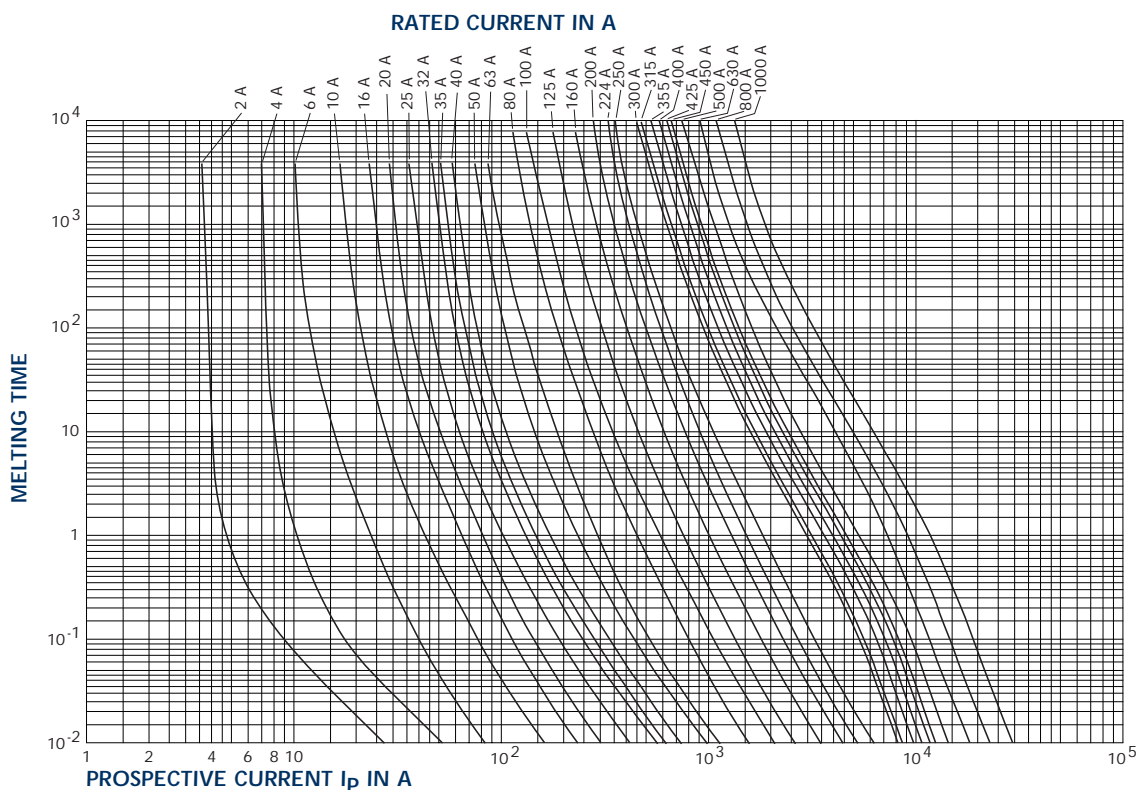
NH Fuses (Plain Blades)
gG 400V, 500V, 690V
gG Curves Set

NH-fuses, 690VAC gG
Current Limitation Curves

Total Clearing I²t



Time VS. Current

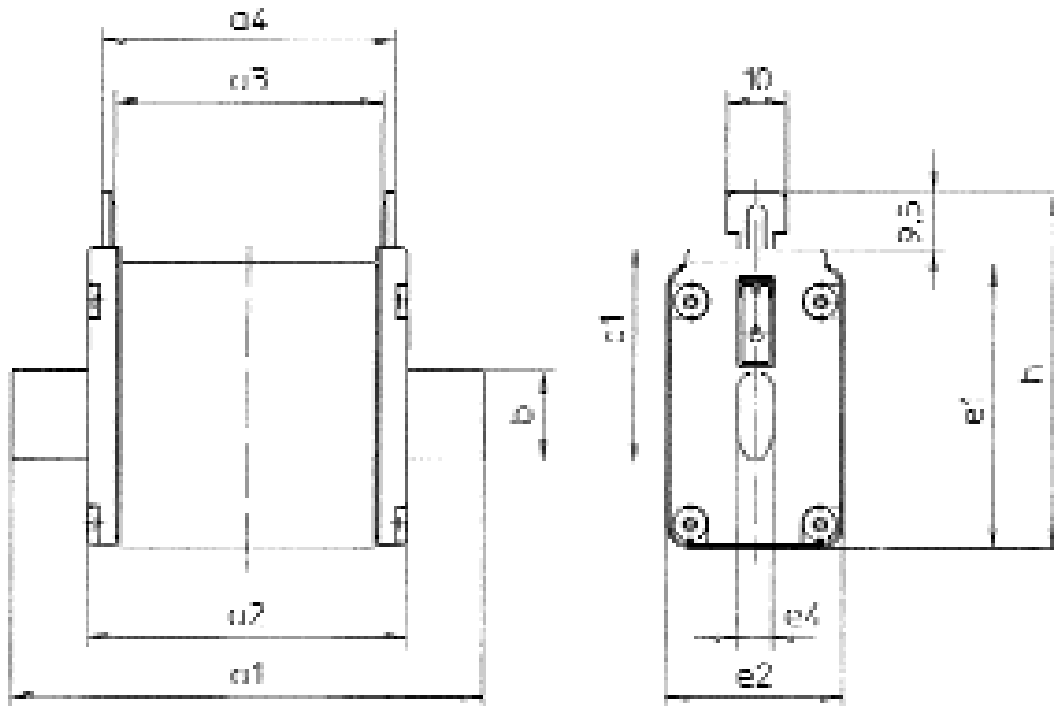


General Purpose IEC Fuses



NH Fuses (Plain Blades) gG/aM Mechanics for ceramic Body

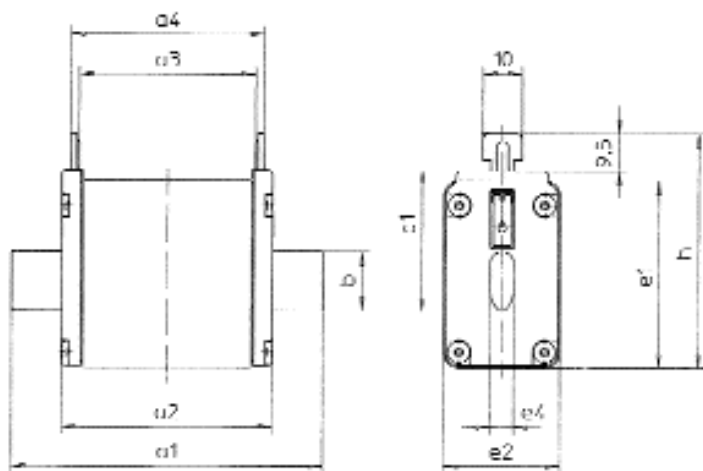
NH Fuses-links



Size	Rated current $I_N(A)$	a1	a2	a3	a4	b	c1	e1	e2	e4	h
Standard 400V and 500V gG with non-isolated gripping lugs											
size 000	2 – 100A	79	52	45,5	49,5	15	35	40,5	20,8	6	52,5
size 00	125/160A	79	52,8	45	50	15	35	47,5	29,5	6	59,5
size 0	2 – 160A (500V)	125	66,8	61	66	15	35	47,5	29,5	6	59,5
size 116	100A (500V), 16 – 125A (400V)	135	70,8	63	68	15	40	47,5	29,5	6	64,5
size 1125	355A (500V), 160 – 250A (400V)	135	70,8	63	68	20	40	52,5	39,5	6	64,5
size 2	16 – 250A	150	72,3	63	68	20	48	52,5	39,5	6	72,5
size 2	300 – 500A	150	72,3	63	68	26	48	60	51	6	72
size 3	250 – 400A	150	72,3	63	68	26	60	60	51	6	83,5
size 3	425 – 800A	150	72,3	63	68	33	60	74	70	6	86
size 4	400 – 1250A	200	85	62	68	49	86	108	90	8	117,5
size 4a	500 – 1250A	200	85	84	90	49	86	108	90	6	117,5
Standard 400V and 500V gG (SGL) with isolated gripping lugs											
size 000	2 – 100A	78	53,4	45,7	49,7	15	35	40,5	20,8	6	52,5
size 00	125/160A	79	53,5	44,8	49	15	35	47,5	29,5	6	59,5
size 0	2 – 160A (500V)	125	67,5	62,5	66,7	15	35	47,5	29,5	6	59,5
size 116	100A (500V), 16 – 125A (400V)	135	71,5	62,8	67	15	40	47,5	29,5	6	64,5
size 1125	250A (500V), 160 – 250A (400V)	135	73,4	63	67,2	20	40	52,5	39,5	6	64,5
size 2	16 – 250A	150	73,4	63	67,2	20	48	52,5	39,5	6	72,5

General Purpose IEC Fuses

NH Fuses (Plain Blades) gG/aM Mechanics for ceramic Body



NH Fuses-links

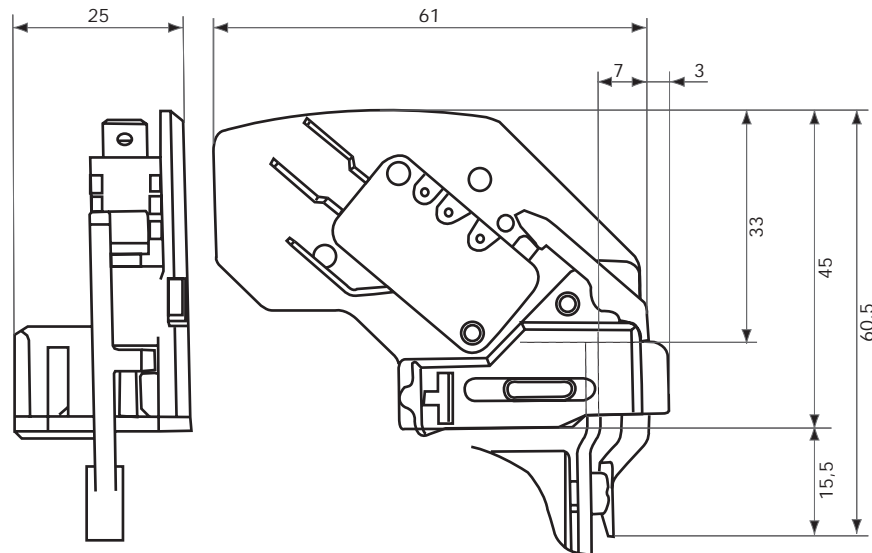
Size	Rated current $I_N(A)$	a1	a2	a3	a4	b	c1	e1	e2	e4	h
size 2	300 – 400A	150	73,4	63	67,2	26	48	60	51	6	72
size 3	250 – 400A	150	73,4	63	68	26	60	60	51	6	83,5
size 3	425 – 630A	150	73,4	63	68	33	60	74	70	6	86
NH 690V gG with non-isolated gripping lugs											
size 000	2 – 35A	79	53,8	45	49	15	35,8	40	20	6	47,8
size 00	40 – 100A	79	53,8	45	49	15	35,8	48	30	6	47,8
size 1	16 – 160A	135	75	64	68	20	40	44	30	6	52
size 1	200 – 250A	135	75	64	68	20	40	47	39	6	52
size 2	35 – 100A	150	75	64	68	26	48	44	30	6	60
size 2	125 – 315A	150	75	64	68	26	60	47	39	6	72
size 3	250 – 300A	150	75	64	68	26	60	47	39	6	72
size 3	315 – 425A	150	75	64	68	33	60	58	51	6	72
size 3	500A	150	75	64	68	33	70	64	64	6	72
size 4	400 – 800A	200	85	62	68	49	86	108	90	8	117,5
size 4a	400 – 800A	200	85	84	90	49	86	108	90	6	117,5
NH 690V gG (SGL) with isolated gripping lugs											
size 000	2 – 35A	79	53,8	45	49	15	35,8	40,5	21	6	47,8
size 0	40 – 125A	79	53,8	45	49	15	35,8	40,5	30	6	47,8
size 1	35 – 200A	135	75	64	68	20	40	51	39	6	52
size 2	32 – 250A	150	75	64	68	26	48	51	39	6	60
size 2	300/315A	150	75	64	68	26	48	60	46	6	60
NH 500V aM with non-isolated gripping lugs											
size 000	2 – 80A	79	53,8	45	49	15	35,8	40,5	21	6	47,8
size 00	100 – 160A	79	53,8	45	49	15	35,8	40,5	30	6	47,8
size 0	100 – 200A	125	68	64	68	15	35,8	44	30	6	47,8
size 1	160 – 250A	135	75	64	68	20	40	47	39	6	52
size 2	250 – 500A	150	75	64	68	26	48	47	39	6	60
size 3	315 – 630A	150	75	64	68	33	60	58	51	6	72
size 4	630 – 1250A	200	85	62	68	49	86	108	90	8	117,5
NH 690V aM with non-isolated gripping lugs											
size 000	2 – 80A	79	52	45,5	49,5	15	35	40,5	20,8	6	52,5
size 00	50 – 160A	79	52,8	45	50	15	35	47,5	29,5	6	59,5
size 0	6 – 200A	125	66,8	61	66	15	35	47,5	29,5	6	59,5
size 1	16 – 315A	135	70,8	63	68	20	40	52,5	39,5	6	64,5
size 2	35 – 500A	150	72,3	63	68	26	48	60	51	6	72
size 3	250 – 630A	150	72,3	63	68	33	60	74	70	6	86
size 4	400 – 1250A	200	85	62	68	49	86	108	90	8	117,5
size 4a	500 – 1250A	200	85	84	90	49	86	108	90	6	117,5
NH 400/500V gTr with non-isolated gripping lugs											
size 2	50 – 250kVA	150	72,3	63	68	26	48	60	51	6	72
size 3	3250 – 400kVA (500V), 500 - 630VA (400V)	150	72,3	63	68	33	60	74	70	6	86
size 4a	100 – 800kVA	200	85	84	90	49	86	108	90	6	117,5

General Purpose IEC Fuses

NH Fuses (Plain Blades) Microswitch indication system for NH-fuses size 000 to 3 with non-isolated gripping lugs

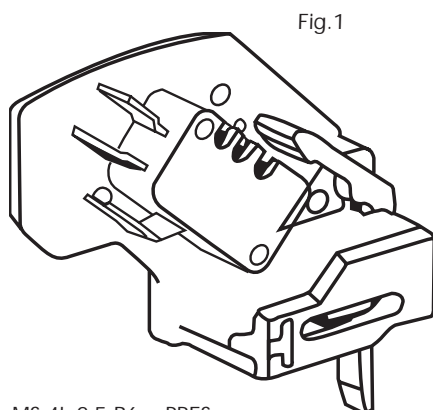


FS ref.-no.	Designation	weight g/piece	pack. unit	Catalog Number
2,8mm clips, automatically resettable G210157	MS 4L 2-5 B2 + PRES	26	3	MS4L2-5B2PRES
6,3mm clips, automatically resettable F210156	MS 4L 2-5 B6 + PRES	30	3	MS4L2-5B6PRES

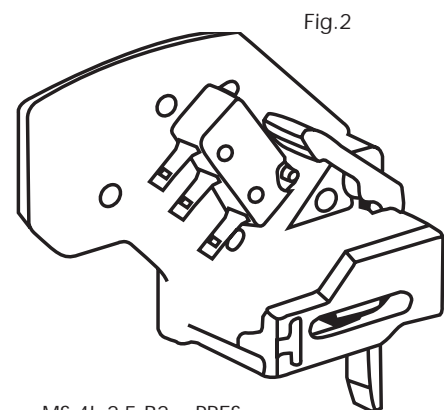


Automatically resettable, these microswitch systems indicate fuse presence (PRES) and proper mounting.

In case of improper mounting or fuse melting, this is indicated (terminal 1-4 closed).



MS 4L 2-5 B6 + PRES
F210156
6,3mm clips



MS 4L 2-5 B2 + PRES
G210157
2,8mm clips